

Supplement dated February 13, 2018
To
Davis New York Venture Fund

This supplement amends the Summary Prospectus, Prospectus, and SAI for the Davis New York Venture Fund dated November 29, 2017.

Permanent Closing of Class T Shares (Trading Symbol: DNVTX)

Davis Funds has closed Class T shares for Davis New York Venture Fund, effective immediately. Accordingly, all references to Class T shares of the Davis New York Venture Fund are hereby removed from the Summary Prospectus, Prospectus, and SAI.

DAVIS NEW YORK VENTURE FUND



A Portfolio of Davis New York Venture Fund, Inc.

Over 45 Years of Reliable Investing™

Class/Ticker: A (NYVTX), B (NYVBX), C (NYVCX), R (NYVRX), T (DNVTX), Y (DNVYX)

SUMMARY PROSPECTUS

November 29, 2017

Before you invest, you may want to review Davis New York Venture Fund's statutory prospectus and statement of additional information, which contain more information about the Fund and its risks. You can find the Fund's statutory prospectus and other information about the Fund, at no cost, online at www.davisfunds.com/prospectuses_and_forms/, by calling 1-800-279-0279, or by sending an e-mail request to dvsinvestor.services@dsaco.com. The current [prospectus](#) and [statement of additional information](#), dated November 29, 2017, as may be further amended or supplemented are incorporated by reference into this summary prospectus and may be obtained, free of charge, in the same manner as the statutory prospectus.

The Securities and Exchange Commission has not approved or disapproved these securities or passed upon the adequacy of this prospectus. Any representation to the contrary is a criminal offense.

Investment Objective

The Fund seeks long-term growth of capital.

Fees and Expenses of the Fund

These tables describe the fees and expenses that you may pay if you buy and hold shares of the Fund. You may qualify for sales charge discounts with respect to Class A shares if you and your family invest, or agree to invest in the future, at least \$100,000 in Davis Funds. For purchases of Class T shares, you may qualify for a sales charge discount if you purchase \$250,000 or more in a single transaction. More information about these and other discounts is available from your financial professional and in the "How to Choose a Share Class" section of the Fund's prospectus on page 17 and in the "Selecting the Appropriate Class of Shares" section of the Fund's statement of additional information on page 39. In addition, descriptions of the sales load waivers and/or discounts for Class A shares with respect to certain financial intermediaries are reproduced in "Appendix A: Intermediary-Specific Sales Charge Waivers and Discounts" to the prospectus based on information provided by the financial intermediary.

Shareholder Fees <i>(fees paid directly from your investment)</i>	Class A shares	Class B shares	Class C shares	Class R shares	Class T shares	Class Y shares
Maximum Sales Charge (Load) Imposed on Purchases <i>(as a percentage of offering price)</i>	4.75%	None	None	None	2.50%	None
Maximum Deferred Sales Charge (Load) <i>(as a percentage of the lesser of the net asset value of the shares redeemed or the total cost of such shares)</i>	0.50%*	4.00%	1.00%	None	None	None
Redemption Fee <i>(as a percentage of total redemption proceeds)</i>	None	None	None	None	None	None

* Only applies if you buy shares valued at \$1 million or more without a sales charge and sell the shares within one year of purchase.

Annual Fund Operating Expenses <i>(expenses that you pay each year as a percentage of the value of your investment)</i>	Class A shares	Class B shares	Class C shares	Class R shares	Class T shares	Class Y shares
Management Fees	0.52%	0.52%	0.52%	0.52%	0.52%	0.52%
Distribution and/or Service (12b-1) Fees	0.24%	1.00%	1.00%	0.50%	0.25%	0.00%
Other Expenses	0.13%	0.35%	0.14%	0.16%	0.23%	0.11%
Total Annual Operating Expenses	0.89%	1.87%	1.66%	1.18%	1.00%	0.63%
Less Fee Waiver or Expense Reimbursement	n/a	n/a	n/a	n/a	0.00% ⁽¹⁾	n/a
Net Expenses	0.89%	1.87%	1.66%	1.18%	1.00%	0.63%

⁽¹⁾ The Adviser is contractually committed to waive fees and/or reimburse the Fund's expenses for Class T shares to the extent necessary to cap total annual fund operating expenses at 1.00% until June 29, 2018. After that date, there is no assurance that the Adviser will continue to cap expenses. The expense cap cannot be terminated prior to June 29, 2018, without the consent of the Board of Directors.

Example. This Example is intended to help you compare the cost of investing in the Fund with the cost of investing in other mutual funds. The Example assumes that you invest \$10,000 in the Fund for the time periods indicated and then redeem all of your shares at the end of those periods. The Example also assumes that your investment has a 5% return each year and the Fund's operating expenses remain the same. Although your actual costs may be higher or lower, based on these assumptions, your costs would be:

	If you redeem your shares in:				If you did not redeem your shares in:			
	1 Year	3 Years	5 Years	10 Years	1 Year	3 Years	5 Years	10 Years
Class A shares	\$562	\$745	\$945	\$1,519	\$562	\$745	\$945	\$1,519
Class B shares	590	888	1,211	1,813	190	588	1,011	1,813
Class C shares	269	523	902	1,965	169	523	902	1,965
Class R shares	120	375	649	1,432	120	375	649	1,432
Class T shares	349	560	789	1,444	349	560	789	1,444
Class Y shares	64	202	351	786	64	202	351	786

Portfolio Turnover

The Fund pays transaction costs, such as commissions, when it buys and sells securities (or “turns over” its portfolio). A higher portfolio turnover rate may indicate higher transaction costs and may result in higher taxes when Fund shares are held in a taxable account. These costs, which are not reflected in annual fund operating expenses or in the example, affect the Fund’s performance. During the most recent fiscal year, the Fund’s portfolio turnover rate was 12% of the average value of its portfolio.

Principal Investment Strategies

Davis Selected Advisers, L.P. (“Davis Advisors” or the “Adviser”), the Fund’s investment adviser, uses the Davis Investment Discipline to invest Davis New York Venture Fund’s portfolio principally in common stocks (including indirect holdings of common stock through depositary receipts) issued by large companies with market capitalizations of at least \$10 billion. Historically, the Fund has invested a significant portion of its assets in financial services companies and in foreign companies, and may also invest in mid- and small-capitalization companies.

Davis Investment Discipline. Davis Advisors manages equity funds using the Davis Investment Discipline. Davis Advisors conducts extensive research to try to identify businesses that possess characteristics that Davis Advisors believes foster the creation of long-term value, such as proven management, a durable franchise and business model, and sustainable competitive advantages. Davis Advisors aims to invest in such businesses when they are trading at discounts to their intrinsic worth. Davis Advisors emphasizes individual stock selection and believes that the ability to evaluate management is critical. Davis Advisors routinely visits managers at their places of business in order to gain insight into the relative value of different businesses. Such research, however rigorous, involves predictions and forecasts that are inherently uncertain. After determining which companies Davis Advisors believes the Fund should own, Davis Advisors then turns its analysis to determining the intrinsic value of those companies’ equity securities. Davis Advisors seeks companies whose equity securities can be purchased at a discount from Davis Advisors’ estimate of the company’s intrinsic value based upon fundamental analysis of cash flows, assets and liabilities, and other criteria that Davis Advisors deems to be material on a company-by-company basis. Davis Advisors’ goal is to invest in companies for the long term (ideally, five years or longer, although this goal may not be met). Davis Advisors considers selling a company’s equity securities if the securities’ market price exceeds Davis Advisors’ estimates of intrinsic value, if the ratio of the risks and rewards of continuing to own the company’s equity securities is no longer attractive, to raise cash to purchase a more attractive investment opportunity, to satisfy net redemptions, or for other purposes.

Principal Risks of Investing in Davis New York Venture Fund

You may lose money by investing in the Fund. Investors in the Fund should have a long-term perspective and be able to tolerate potentially sharp declines in value.

The principal risks of investing in the Fund are:

Common Stock Risk. Common stock represents an ownership position in a company. An adverse event may have a negative impact on a company and could result in a decline in the price of its common stock. Common stock is generally subordinate to an issuer’s other securities, including preferred, convertible, and debt securities.

Depositary Receipts Risk. Depositary receipts, consisting of American Depositary Receipts, European Depositary Receipts, and Global Depositary Receipts, are certificates evidencing ownership of shares of a foreign issuer. Depositary receipts are subject to many of the risks associated with investing directly in foreign securities. Depositary receipts may trade at a discount, or a premium, to the underlying security and may be less liquid than the underlying securities listed on an exchange.

Emerging Market Risk. Securities of issuers in emerging and developing markets may offer special investment opportunities, but present risks not found in more mature markets.

Fees and Expenses Risk. The Fund may not earn enough through income and capital appreciation to offset the operating expenses of the Fund. All mutual funds incur operating fees and expenses. Fees and expenses reduce the return that a shareholder may earn by investing in a fund, even when a fund has favorable performance. A low-return environment, or a bear market, increases the risk that a shareholder may lose money.

Financial Services Risk. Risks of investing in the financial services sector include: (i) systemic risk: factors outside the control of a particular financial institution may adversely affect the ability of the financial institution to operate normally or may impair its financial condition; (ii) regulatory actions: financial services companies may suffer setbacks if regulators change the rules under which they operate; (iii) changes in interest rates: unstable and/or rising interest rates may have a disproportionate effect on companies in the financial services sector; (iv) non-diversified loan portfolios: financial services companies may have concentrated portfolios that makes them vulnerable to economic conditions that affect an industry; (v) credit: financial services companies may have exposure to investments or agreements that may lead to losses; and (vi) competition: the financial services sector has become increasingly competitive.

Foreign Country Risk. Securities of foreign companies (including ADRs) may be subject to greater risk as foreign economies may not be as strong or diversified, foreign political systems may not be as stable, and foreign financial reporting standards may not be as rigorous as they are in the United States. There may also be less information publicly available regarding the non-U.S. issuers and their securities. These securities may be less liquid (and, in some cases, may be illiquid) and could be harder to value than more liquid securities.

Foreign Currency Risk. The change in value of a foreign currency against the U.S. dollar will result in a change in the U.S. dollar value of securities denominated in that foreign currency. For example, when the Fund holds a security that is denominated in a foreign currency, a decline of that foreign currency against the U.S. dollar would generally cause the value of the Fund's shares to decline.

Headline Risk. The Fund may invest in a company when the company becomes the center of controversy after receiving adverse media attention concerning its operations, long-term prospects, management, or for other reasons. While Davis Advisors researches companies subject to such contingencies, it cannot be correct every time, and the company's stock may never recover or may become worthless.

Large-Capitalization Companies Risk. Companies with \$10 billion or more in market capitalization are considered by the Adviser to be large-capitalization companies. Large-capitalization companies generally experience slower rates of growth in earnings per share than do mid- and small-capitalization companies.

Manager Risk. Poor security selection or focus on securities in a particular sector, category, or group of companies may cause the Fund to underperform relevant benchmarks or other funds with a similar investment objective.

Mid- and Small-Capitalization Companies Risk. Companies with less than \$10 billion in market capitalization are considered by the Adviser to be mid- or small-capitalization companies. Mid- and small-capitalization companies typically have more limited product lines, markets and financial resources than larger companies and their securities may trade less frequently and in more limited volume than those of larger, more mature companies.

Stock Market Risk. Stock markets tend to move in cycles, with periods of rising prices and periods of falling prices, including the possibility of sharp declines.

Your investment in the Fund is not a bank deposit and is not insured or guaranteed by the Federal Deposit Insurance Corporation or any other government agency, entity or person.

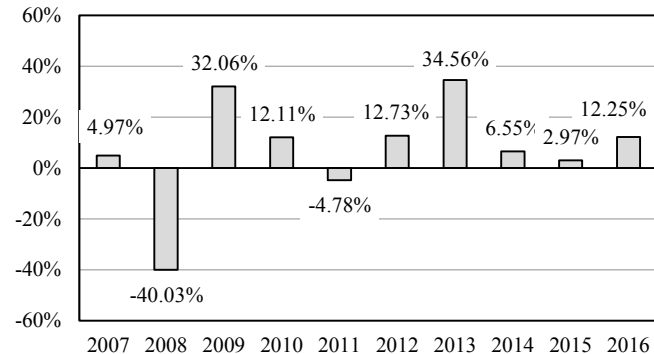
Performance Results

The bar chart below provides some indication of the risks of investing in the Davis New York Venture Fund by showing how the Fund's investment results have varied from year to year. The following table shows how the Fund's average annual total returns, for the periods indicated, compare with those of the S&P 500[®] Index, a broad-based securities market index. The Fund's past performance (before and after taxes) is not necessarily an indication of how the Fund will perform in the future. Updated information on the Fund's results can be obtained by visiting www.davisfunds.com or by calling 1-800-279-0279.

After-tax returns are shown only for Class A shares; after-tax returns for other share classes will vary. After-tax returns are calculated using the highest individual federal marginal income tax rates and do not reflect the impact of state and local taxes. Actual after-tax returns depend on an investor's tax situation and may differ from those shown, and after-tax returns shown are not relevant to investors who hold their Fund shares through a tax-deferred arrangement, such as a 401(k) plan or an individual retirement account. Performance information for Class T shares of the Fund are not provided because this share class has not been in operation for a full calendar year.

Calendar Year Total Returns for Class A Shares

(Sales loads are not reflected in the bar chart and, if these amounts were reflected, returns would be less than those shown.)



Highest/Lowest quarterly results during the time period were:

Highest 21.05% (quarter ended June 30, 2009)

Lowest -24.52% (quarter ended December 31, 2008)

Total return for the nine months ended September 30, 2017 (non-annualized) was 13.92%.

Average Annual Total Returns

(For the periods ended December 31, 2016, with maximum sales charge)

	Past 1 Year	Past 5 Years	Past 10 Years
Class A shares return before taxes	6.92%	12.22%	4.68%
Class A shares return after taxes on distributions	3.79%	8.80%	2.99%
Class A shares return after taxes on distributions and sale of fund shares	6.25%	9.42%	3.56%
Class B shares return before taxes	7.28%	12.04%	4.54%
Class C shares return before taxes	10.45%	12.43%	4.37%
Class R shares return before taxes	11.94%	12.97%	4.85%
Class T shares return before taxes*	N/A	N/A	N/A
Class Y shares return before taxes	12.57%	13.60%	5.46%
S&P 500 [®] Index reflects no deduction for fees, expenses, or taxes	11.96%	14.66%	6.95%

* Class T shares' inception date is June 30, 2017 and performance results are not available for a full calendar year. For more information regarding returns, see the "Information Concerning the Annual Total Returns for the Life of Class" section in the Fund's prospectus.

Management

Investment Adviser. Davis Selected Advisers, L.P. serves as the Fund’s investment adviser.

Sub-Adviser. Davis Selected Advisers – NY, Inc., a wholly owned subsidiary of the Adviser, serves as the Fund’s sub-adviser.

Portfolio Managers. As of the date of this prospectus, the Portfolio Managers listed below are jointly and primarily responsible for the day-to-day management of the Fund’s portfolio.

Portfolio Managers	Experience with this Fund	Primary Title with Investment Adviser or Sub-Adviser
Christopher Davis	Since October 1995	Chairman, Davis Selected Advisers, L.P.
Danton Goei	Since January 2014	Vice President, Davis Selected Advisers – NY, Inc.

Purchase and Sale of Fund Shares

	Class A, B, C, and T shares	Class Y shares	Class R shares
Minimum Initial Investment	\$1,000	\$5,000,000	\$500,000
Minimum Additional Investment	25	25	25

You may sell (redeem) shares each day the New York Stock Exchange is open. Your transaction may be placed through your dealer or financial adviser, by writing to **Davis Funds, P.O. Box 8406, Boston, MA 02266-8406**, telephoning **1-800-279-0279**, or accessing Davis Funds’ website (**www.davisfunds.com**). Certain financial intermediaries may impose different restrictions than those shown above.

Tax Information

If the Fund earns income or realizes capital gains, it intends to make distributions that may be taxed as ordinary income, qualified dividend income or capital gains by federal, state and local authorities.

Payments to Broker-Dealers and Other Financial Intermediaries

If you purchase Davis New York Venture Fund through a broker-dealer or other financial intermediary (such as a bank), the Fund and its related companies may pay the intermediary for the sale of Fund shares and related services. These payments may create a conflict of interest by influencing the broker-dealer or other intermediary and your salesperson to recommend the Fund over another investment. Ask your salesperson or visit your financial intermediary’s website for more information.

Investment Company Act File No. 811-1701

Click here to view the Fund’s [prospectus](#) or [statement of additional information](#).