

Supplement dated October 20, 2017
To
Davis Financial Portfolio
Portfolio of DAVIS VARIABLE ACCOUNT FUND, INC.
Summary Prospectus
dated May 1, 2017

Add the following risk to the list of principal risks.

Focused Portfolio Risk. Funds that invest in a limited number of companies may have more risk because changes in the value of a single security may have a more significant effect, either negative or positive, on the value of the Fund's total portfolio.

DAVIS FINANCIAL PORTFOLIO



A Portfolio of Davis Variable Account Fund, Inc.

Ticker: QDFPAX

Over 45 Years of Reliable Investing™

SUMMARY PROSPECTUS

May 1, 2017

Before you invest, you may want to review the Fund's [prospectus](#) and [statement of additional information](#), which contain more information about the Fund and its risks. You can find the Fund's prospectus and other information about the Fund (including the Fund's statement of additional information and annual report), at no cost, online at www.davisfunds.com/prospectuses_and_forms/. You can also get this information, at no cost, by calling **1-800-279-0279** or by sending an e-mail request to dvsinvestor.services@dsaco.com. The Fund's prospectus and statement of additional information, each dated May 1, 2017, as amended and supplemented from time to time, are incorporated by reference into (legally made part of) this Summary Prospectus.

The Securities and Exchange Commission has not approved or disapproved these securities or passed upon the adequacy of this prospectus. Any representation to the contrary is a criminal offense.

Investment Objective

The Fund seeks long-term growth of capital.

Fees and Expenses of the Fund

This table describes the fees and expenses that you may pay if you buy and hold shares of Davis Financial Portfolio.

OWNERS OF VARIABLE INSURANCE CONTRACTS THAT INVEST IN THE SHARES SHOULD REFER TO THE VARIABLE INSURANCE CONTRACT PROSPECTUS FOR A DESCRIPTION OF FEES AND EXPENSES, AS THE TABLE AND EXAMPLES DO NOT REFLECT DEDUCTIONS AT THE SEPARATE ACCOUNT LEVEL OR CONTRACT LEVEL. INCLUSION OF THESE CHARGES WOULD INCREASE THE FEES AND EXPENSES DESCRIBED BELOW.

Annual Fund Operating Expenses

(expenses that you pay each year as a percentage of the value of your investment)

Management Fees	0.55%
Distribution and/or Service (12b-1) Fees	0.00%
Other Expenses	0.15%
Total Annual Operating Expenses	0.70%

Example. This Example is intended to help you compare the cost of investing in the Fund with the cost of investing in other mutual funds. The Example assumes that you invest \$10,000 in the Fund for the time periods indicated and then redeem all of your shares at the end of those periods. The Example also assumes that your investment has a 5% return each year and the Fund's operating expenses remain the same. Although your actual costs may be higher or lower, based on these assumptions, your costs would be:

	1 Year	3 Years	5 Years	10 Years
Davis Financial Portfolio	\$72	\$224	\$390	\$871

Portfolio Turnover

The Fund pays transaction costs, such as commissions, when it buys and sells securities (or "turns over" its portfolio). A higher portfolio turnover rate may indicate higher transaction costs. These costs, which are not reflected in annual fund operating expenses or in the example, affect the Fund's performance. During the most recent fiscal year, the Fund's portfolio turnover rate was 12% of the average value of its portfolio.

Principal Investment Strategies

Davis Selected Advisers, L.P. ("Davis Advisers" or the "Adviser"), the Fund's investment adviser, uses the Davis Investment Discipline to invest at least 80% of the Fund's net assets, plus any borrowing for investment purposes, in securities issued by companies principally engaged in the financial services sector. The Fund invests principally in common stocks (including indirect holdings of common stock through depositary receipts). The Fund may invest in large, medium or small companies without regard to market capitalization and may invest in issuers in foreign countries, including countries with developed or emerging markets.

A company is principally engaged in financial services if it owns financial services-related assets that constitute at least 50% of the value of all of its assets, or if it derives at least 50% of its revenues from providing financial services. Companies in the financial services sector include commercial banks, industrial banks, savings institutions, finance companies, diversified financial services companies, investment banking firms, securities brokerage houses, investment advisory companies, leasing companies, insurance companies and companies providing similar services.

Davis Investment Discipline. Davis Advisors manages equity funds using the Davis Investment Discipline. Davis Advisors conducts extensive research to try to identify businesses that possess characteristics that Davis Advisors believes foster the creation of long-term value, such as proven management, a durable franchise and business model, and sustainable competitive advantages. Davis Advisors aims to invest in such businesses when they are trading at discounts to their intrinsic worth. Davis Advisors emphasizes individual stock selection and believes that the ability to evaluate management is critical. Davis Advisors routinely visits managers at their places of business in order to gain insight into the relative value of different businesses. Such research, however rigorous, involves predictions and forecasts that are inherently uncertain. After determining which companies Davis Advisors believes the Fund should own, Davis Advisors then turns its analysis to determining the intrinsic value of those companies' equity securities. Davis Advisors seeks companies whose equity securities can be purchased at a discount from Davis Advisors' estimate of the company's intrinsic value based upon fundamental analysis of cash flows, assets and liabilities, and other criteria that Davis Advisors deems to be material on a company-by-company basis. Davis Advisors' goal is to invest in companies for the long term (ideally, five years or longer, although this goal may not be met). Davis Advisors considers selling a company's equity securities if the securities' market price exceeds Davis Advisors' estimates of intrinsic value, if the ratio of the risks and rewards of continuing to own the company's equity securities is no longer attractive, to raise cash to purchase a more attractive investment opportunity, to satisfy net redemptions or for other purposes.

Principal Risks of Investing in Davis Financial Portfolio

You may lose money by investing in the Fund. Investors in the Fund should have a long-term perspective and be able to tolerate potentially sharp declines in value.

The principal risks of investing in the Fund are:

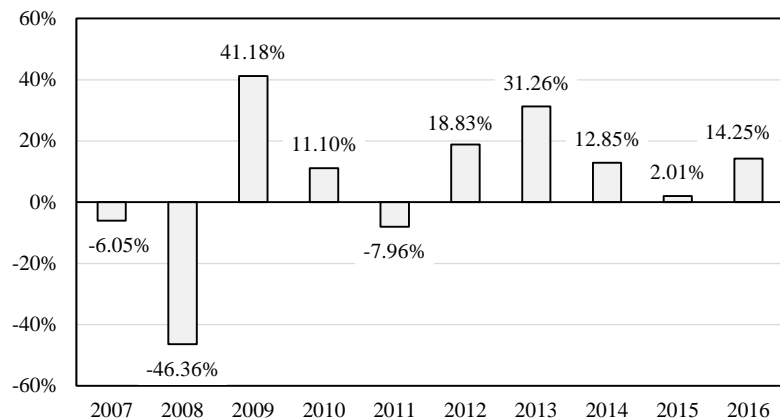
- **Common Stock Risk.** Common stock represents an ownership position in a company. An adverse event may have a negative impact on a company and could result in a decline in the price of its common stock. Common stock is generally subordinate to an issuer's other securities, including preferred, convertible and debt securities.
- **Credit Risk.** Financial institutions are often highly leveraged and may not be able to make timely payments of interest and principal.
- **Depository Receipts Risk.** Depository receipts, consisting of American Depository Receipts, European Depository Receipts and Global Depository Receipts, are certificates evidencing ownership of shares of a foreign issuer. Depository receipts are subject to many of the risks associated with investing directly in foreign securities. Depository receipts may trade at a discount, or a premium, to the underlying security and may be less liquid than the underlying securities listed on an exchange.
- **Emerging Market Risk.** Securities of issuers in emerging and developing markets may offer special investment opportunities, but present risks not found in more mature markets. These securities may be more volatile and less liquid, which may also make them more difficult to value, than securities issued in countries with developed economies.
- **Fees and Expenses Risk.** The Fund may not earn enough through income and capital appreciation to offset the operating expenses of the Fund. All mutual funds incur operating fees and expenses. Fees and expenses reduce the return that a shareholder may earn by investing in a fund, even when a fund has favorable performance. A low-return environment, or a bear market, increases the risk that a shareholder may lose money.
- **Financial Services Risk.** Risks of investing in the financial services sector include: (i) systemic risk; (ii) regulatory actions; (iii) changes in interest rates: unstable and/or rising interest rates; (iv) non-diversified loan portfolios; (v) credit; and (vi) competition.
- **Foreign Country Risk.** Securities of foreign companies (including ADRs) may be subject to greater risk, as foreign economies may not be as strong or diversified, foreign political systems may not be as stable and foreign financial reporting standards may not be as rigorous as they are in the United States. There may also be less information publicly available regarding the non-U.S. issuers and their securities. These securities may be less liquid (and, in some cases, may be illiquid) and could be harder to value than more liquid securities.
- **Foreign Currency Risk.** The change in value of a foreign currency against the U.S. dollar will result in a change in the U.S. dollar value of securities denominated in that foreign currency. For example, when the Fund holds a security that is denominated in a foreign currency, a decline of that foreign currency against the U.S. dollar would generally cause the value of the Fund's shares to decline.
- **Headline Risk.** The Fund may invest in a company when the company becomes the center of controversy after receiving adverse media attention concerning its operations, long-term prospects, management or for other reasons. While Davis Advisors researches companies subject to such contingencies, it cannot be correct every time and the company's stock may never recover or may become worthless.
- **Interest Rate Sensitivity Risk.** Interest rates may have a powerful influence on the earnings of financial institutions.
- **Large-Capitalization Companies Risk.** Companies with \$10 billion or more in market capitalization are considered by the Adviser to be large-capitalization companies. Large-capitalization companies generally experience slower rates of growth in earnings per share than do mid- and small-capitalization companies.
- **Manager Risk.** Poor security selection or focus on securities in a particular sector, category or group of companies may cause the Fund to underperform relevant benchmarks or other funds with a similar investment objective.
- **Mid- and Small-Capitalization Companies Risk.** Companies with less than \$10 billion in market capitalization are considered by the Adviser to be mid- or small-capitalization companies. Mid- and small-capitalization companies typically have more limited product lines, markets and financial resources than larger companies, and their securities may trade less frequently and in more limited volume than those of larger, more mature companies.
- **Stock Market Risk.** Stock markets tend to move in cycles, with periods of rising prices and periods of falling prices, including the possibility of sharp declines.

Your investment in the Fund is not a bank deposit and is not insured or guaranteed by the Federal Deposit Insurance Corporation or any other government agency, entity or person.

Performance Results

The bar chart below provides some indication of the risks of investing in Davis Financial Portfolio by showing how the Fund's investment results have varied from year to year. The bar chart depicts the change in performance from year to year during the periods indicated, but does not include charges or expenses attributable to any insurance product, which would lower the performance illustrated. The following table shows how the Fund's average annual total returns for the periods indicated compare with those of the S&P 500[®] Index, a broad-based securities market index. The Fund's past performance is not necessarily an indication of how the Fund will perform in the future. Updated information on the Fund's results can be obtained by visiting www.davisfunds.com or by calling **1-800-279-0279**.

Calendar Year Total Returns



Highest/Lowest quarterly results during the time period were:

Highest

25.67% (quarter ended June 30, 2009)

Lowest

-28.13% (quarter ended December 31, 2008)

Total return for the three months ended March 31, 2017 (non-annualized) was 4.63%.

Average Annual Total Returns (For the periods ended December 31, 2016)	Past 1 Year	Past 5 Years	Past 10 Years
Davis Financial Portfolio	14.25%	15.45%	4.08%
S&P 500 [®] Index	11.96%	14.66%	6.95%

Management

Investment Adviser. Davis Selected Advisers, L.P.

Sub-Adviser. Davis Selected Advisers–NY, Inc., a wholly owned subsidiary of the Adviser.

Portfolio Manager	Experience with this Fund	Primary Title with Investment Adviser or Sub-Adviser
Christopher Davis	<ul style="list-style-type: none"> - From July 1999 until May 2007 - Since January 2014 	Chairman, Davis Selected Advisers, L.P.

Purchase and Sale of Fund Shares

Insurance companies offer variable annuity and variable life insurance products through separate accounts. Separate accounts, not variable product owners, are the shareholders of the Fund. Variable product owners hold interests in separate accounts. The terms of the offering of interests in separate accounts are included in the variable annuity or variable life insurance product prospectus. Only separate accounts of insurance companies that have signed the appropriate agreements with the Fund can buy or sell shares of the Fund. Redemptions, like purchases, may be effected only through the separate accounts of participating insurance companies or through qualified plans. Requests are duly processed at the net asset value next calculated after your order is received in good order by the Fund or its agents. Refer to the appropriate separate account prospectus or plan documents for details.

Tax Information

Because an investment in Davis Financial Portfolio may only be made through variable insurance contracts and qualified plans, it is anticipated that any income dividends or net capital gains distributions made by the Fund will be exempt from current federal income taxation if left to accumulate within the variable insurance contract or qualified plan. The federal income tax status of your investment depends on the features of your qualified plan or variable insurance contract. Investors should look to the Contract Prospectus for additional tax information.

Payments to Broker-Dealers and Other Financial Intermediaries

Davis Financial Portfolio and its distributor or its affiliates may make payments to the insurer and/or its related companies for distribution and/or other services; some of the payments may go to broker-dealers and other financial intermediaries. These payments may create a conflict of interest for an intermediary, or be a factor in the insurer's decision to include the Fund as an underlying investment option in a variable contract. Ask your financial advisor for more information.

Investment Company Act File No. 811-09293

[Click here to view the Fund's prospectus and statement of additional information.](#)